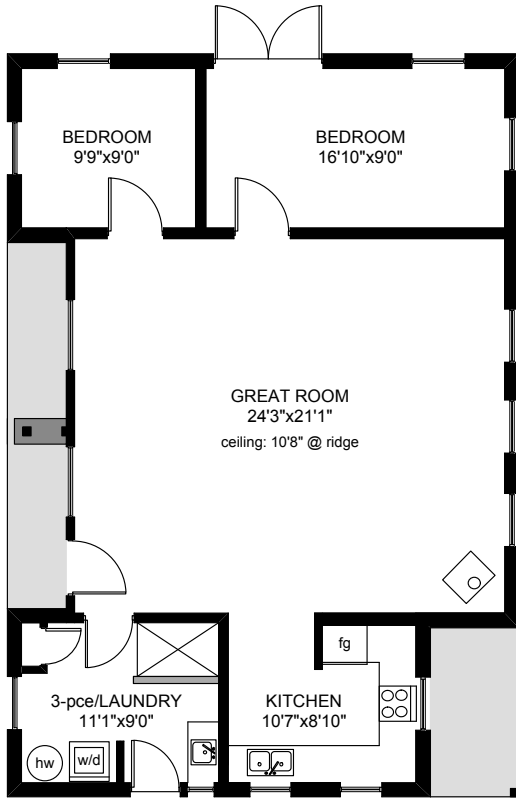

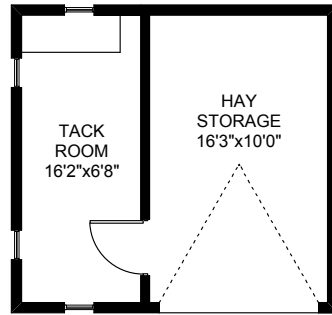



1175 GREIG AVENUE

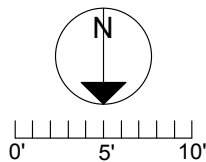



STONE HOUSE
 1094 SQ.FT




TACK/HAY
 320 SQ.FT

	FINISHED SQ. FT.	UNFINISHED SQ. FT.	TOTAL SQ. FT.
MAIN	1748	0	1748
LOWER	1445	0	1445
MAIN HOUSE	3223	0	3223
GARAGE	0	590	590
PORCHES	0	852	852
STONE HSE.	1094	0	1094
TACK/HAY	0	320	320
BARN:			
MAIN	0	1595	1595
UPPER	0	1595	1595
TOTAL	4317	3190	6413



PREPARED FOR THE EXCLUSIVE USE OF
THE NEAL ESTATE TEAM OF RE/MAX ALLIANCE

MEASURED ON: 06/01/15
 DRAWING FILE: 12833

Tafe Measure VICTORIA, B.C.
 Ph. 883.8894
 www.tafemeasure.com